

l'oggetto del desiderio object of desire

www.voltolina.com

31. Chandelier from the **Nuova Montart** collections, a company specialised in the production of classic style light fittings and decorative accessories, made of wrought iron and hand finished with water-based colours and gold leaf. The unmistakable beauty of the hand made Murano glass and the valuable Swarovski crystals add a touch of exclusivity to these items, that may be custom design made.

32. **"Cascata"** by **Oltremondano** is a lighting fixture made up of a set of diffusers and lends itself well for customisation: diffuser available in six different finishes; size of the diffuser: from 30 to 161 cm; variable cable length; houses 18W to 58W fluorescent lamps. The model shown here features 14 diffusers with 58W fluorescent tubes.

33. **"Floral"**, designed by Hiroki Takada for **Panzeri Carlo srl**, is a pendant stemming from new aesthetic intuitions, giving the ambient a spark of fresh and unusual originality, as sign of a subtle and lively irony. It is available as ceiling, floor and table lamp.

34. The **Square** collection by **Prearo** includes items made in lacquered metal and quarrels made in hand-worked Murano glass: this line is particularly bright and spectacular, its articles are available in several sizes according to the request. Also available in the halogen and incandescent versions.

35. **"Strip"**, designed by Matteo Ragni for **Ruggiu**, is a geometrically shaped table lamp, essentially simple in its concept. With LED technology, it is made of Corian®, resulting in lightweight lines, where non-essential details disappear and shades get fluid and aerodynamic. Available also as wall lamp.

36. **"Buonanotte!"**, designed by Giulio Iacchetti for **Studio Italia Design**, is a night-table lamp by the innovative features. It is turned off by resting on the base an open book, thus acting also as bookstand and marker.

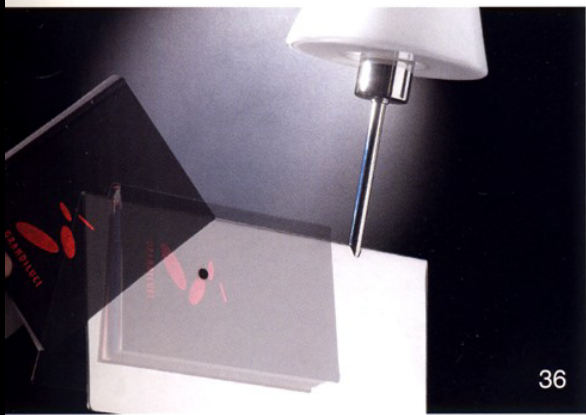
37. Ceiling lamp from **"Las Vegas"** collection by Cierrestudio for **Sil Lux**. Engraved blown glass lampshade with rhinestone applications available in crystal or sandblasted finish. Glass spheres in sandblasted. Red colour on demand only. Frame in chrome.

38. **"Pick-Up"**, designed by Roberto Giacomucci for **Ultraluce**, is pendant made of rotational - worked polyethylene with white PMMA diffuse. By the audacious, sinuous and provoking shape, it mounts two T5C circle lamps. Available white, green and orange.

39. **"Scudo Saraceno"**, glass, brass and burnished metal. With this glass version of the Fortuny® lamps, **Venetia Studium** keeps on the centuries-old tradition of the Venetian master glass blowers, while retaining the elegance and originality of the shapes found in the silk version. The brilliance and transparency of the glass enhance the delicate gold decoration, made even more precious by the burnished metal of the decorative metal ring. All models proposed are available with either a metal rim or a decorative metal ring.

40. By **Voltolina**, **"Barcelona"** chandelier, made of hand worked 24% lead crystal. Coming either with nickel or 24kt gold finishing. It implements "Leonardo System", a company's patent, an innovative system that allows a quick and safe assembling of the arms and their relevant electric wirings.

39



36



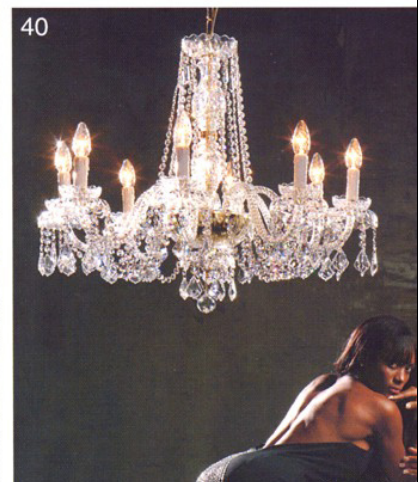
38



37



39



40

illuminotecnica

EUROPE LIGHT



www.illuminotecnica.com